

INFANT MORTALITY

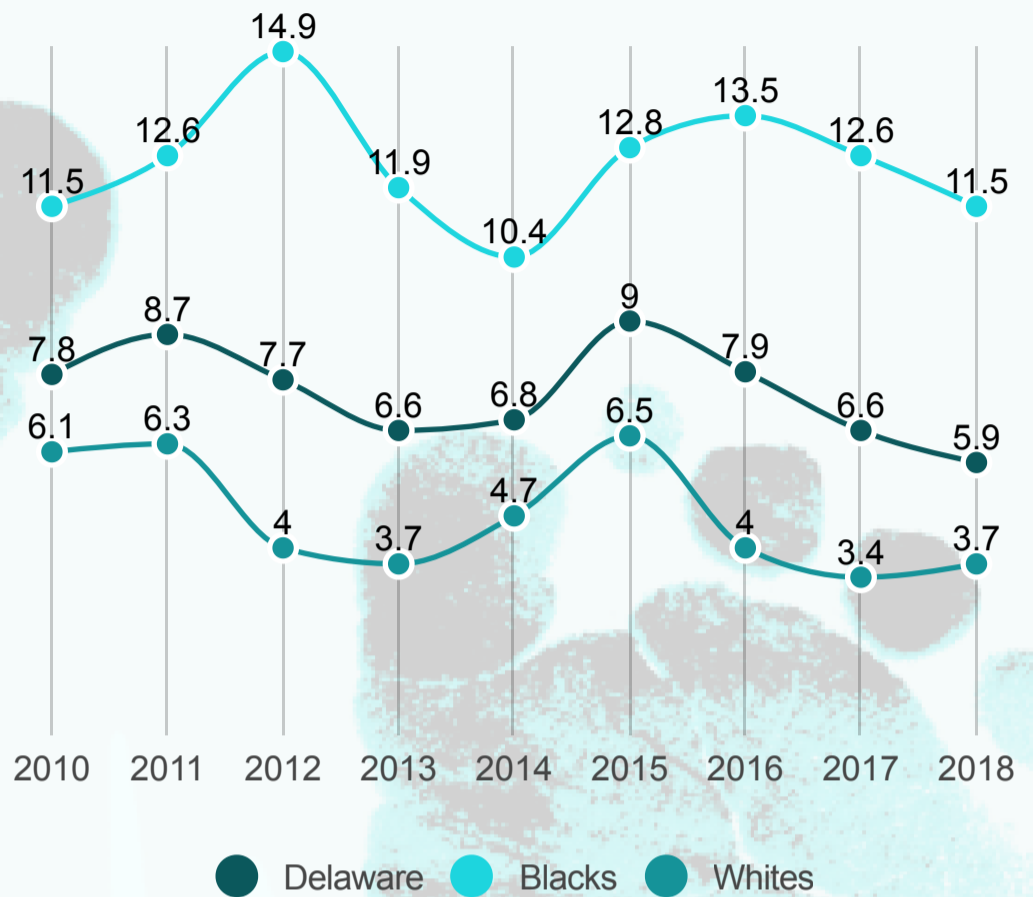


<https://detrives.com/title-v>



INFANT MORTALITY

Infant mortality is the death of an infant or a newborn before his or her first birthday. The infant mortality rate (i.e., IMR) is expressed as the total number of infant deaths for every 1,000 live births. The IMR not only provides important information about a mother and an infant's health, but also provides insight into the overall health of a society.

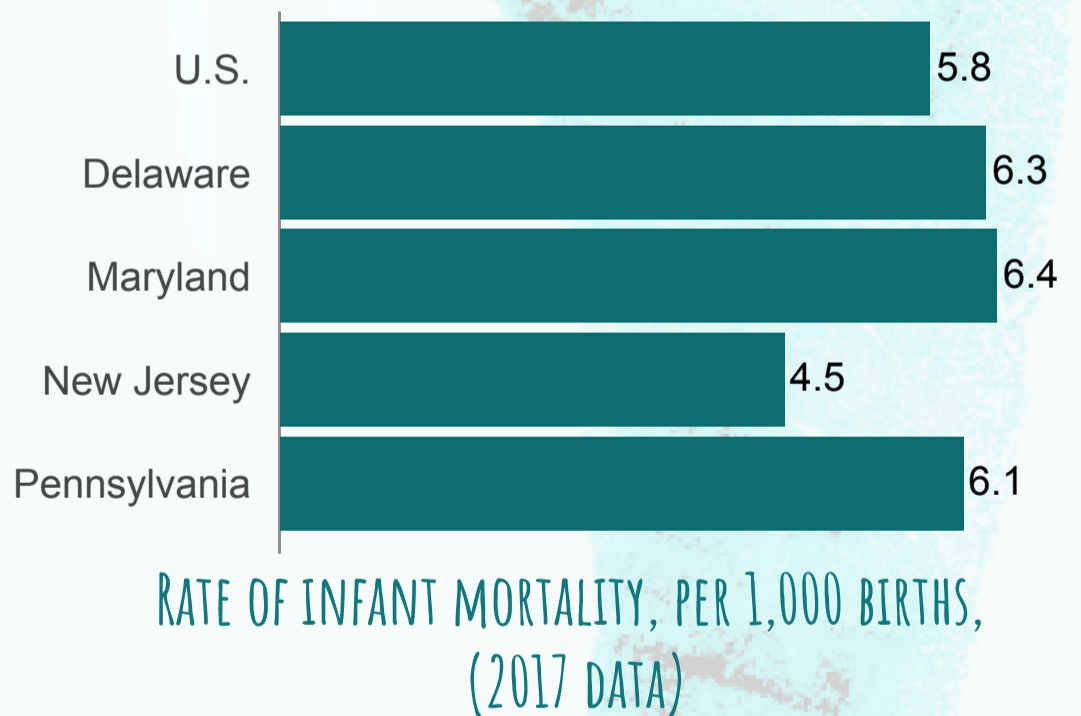


RATE OF DELAWARE INFANT MORTALITY, PER 1,000 BIRTHS BASED ON RACE/ETHNICITY

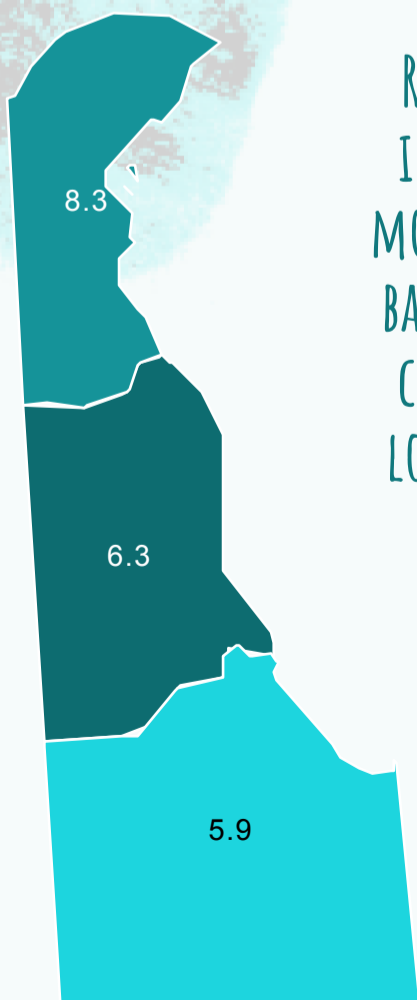


HOW ARE WE DOING?

There was approximately 34 percent decline in IMR from a high of 9 per 1,000 live births in 2015 to 6.6 in 2018.



RATE OF INFANT MORTALITY, PER 1,000 BIRTHS, (2017 DATA)



RATE OF INFANT MORTALITY BASED ON COUNTY LOCATION



SIGNIFICANCE

The top five leading causes of infant mortality are: 1) birth defects; 2) preterm and low birth weight; 3) maternal pregnancy complications; 4) sudden infant death syndrome; and 5) injuries (i.e., suffocation)